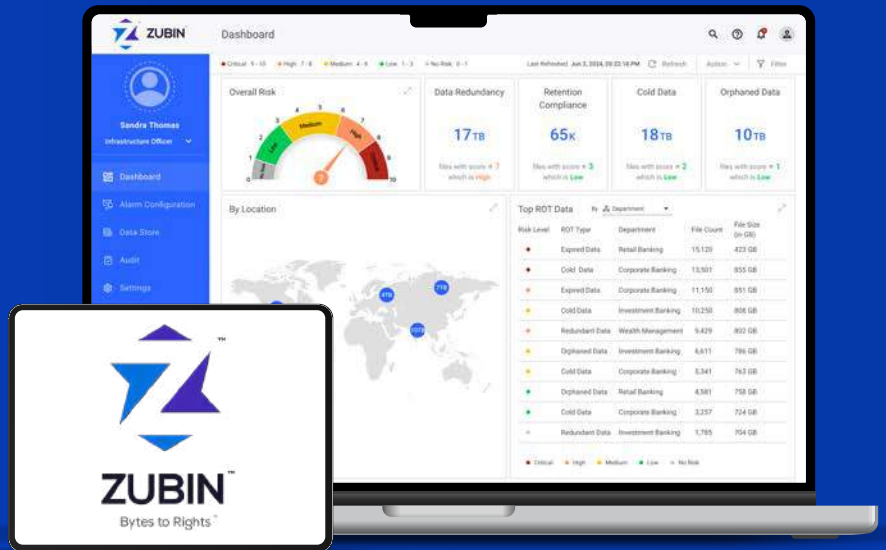


Data Transformation and Sustainability

Zubin: AI-powered, self-service data management software



Cloud sustainability is the new frontier, and data holds the key.

Accenture indicates a potential decrease of up to 84% in carbon emissions through cloud adoption. That's equivalent to taking 22 million cars off the road!!!

But the question remains - what to migrate, where to tier and how to optimize?

That's where Zubin comes in.

Zubin is Data Dynamics' AI-powered self-service data management software, bringing a fresh approach to privacy, security, compliance, governance and optimization in the world of AI-led workloads. It empowers enterprises by enabling users across all levels - from C-suite to data owners - to discover, define, act, transform, and audit data through a user-friendly interface. Zubin brings correlation, consistency and standardization across your organization by delivering granular insights, deriving recommended workflows and automating actions using personalized policies and RBAC-driven processes. This transformation fosters a culture of data ownership, where everyone becomes a data champion, and the organization fulfills its responsibility as a data custodian.

Hybrid-Cloud Data Mobility

67% of businesses need data mobility, but only 38% have a plan.

Zubin enables seamless data transfer between cloud and on-premise environments. It utilizes secure data transfer protocols, ensuring data confidentiality during transit through encryption and includes archival, retrieval, and bidirectional conversion (file to object & object to file) with data quarantine capabilities. Additionally, Zubin optimizes performance by employing data compression and transferring only incremental updates, minimizing resource utilization.

Data Usage & Traceability

Zubin maintains a centralized data index to ensure transparency in data usage activities, facilitating regulatory compliance, audits, and responsible data handling practices. The software employs metadata discovery for data lifecycle management and usage pattern analysis, supporting data relevance assessment, retention, and disposal policies. This provides enterprises with a comprehensive view of storage usage, enabling informed decisions for optimization, such as data minimization, tiering, archival, and migration.

Data Aggregation & Harmonization

Zubin tackles data silos and inconsistencies by aggregating data from diverse sources like file and object storage, and data lakes. It utilizes data mapping and schema management tools to transform this data into a unified format, delivering insights and actionability across the breadth of your business - from C-Suite to a data owner. This facilitates comprehensive data analysis and eliminates challenges arising from fragmented data structures.

Data Lifecycle Management and Footprint Reduction

Global data storage is exploding (230 zettabytes by 2025!), with environmental concerns rising.

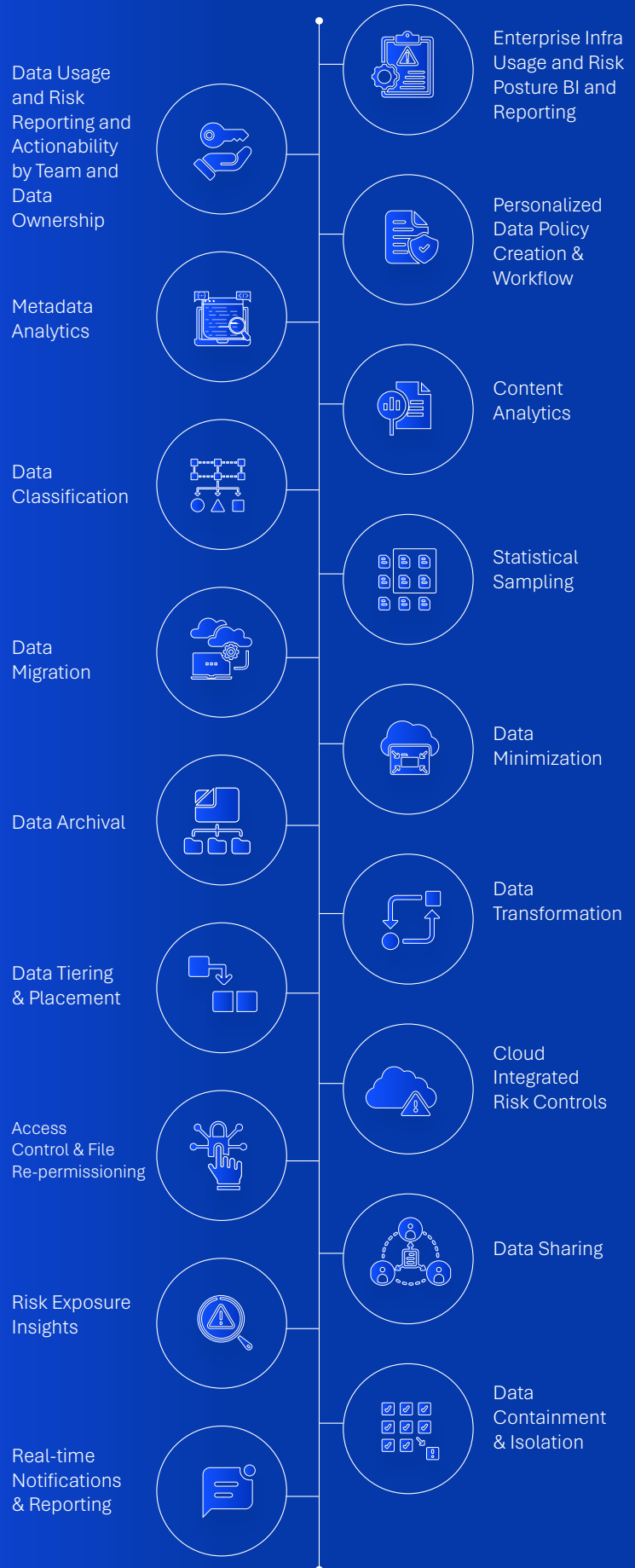
Zubin automates data lifecycle management based on predefined policies for data discovery, classification and retention. This ensures data is handled according to its designated purpose and regulatory requirements. Furthermore, Zubin utilizes compression and deduplication techniques to minimize storage footprint, optimizing data center resource allocation.

Foundations for Infrastructure Optimization and Scalability

- **Sustainable Microservices Architecture:** Utilizes a modular, containerized architecture for independent deployment and scalability. Communication between these microservices occurs through a lightweight API gateway, promoting efficient resource utilization and fault tolerance.
- **Unstructured Data Processing and Transformation:** Incorporates a hub-and-spoke architecture, leveraging a single central Zubin instance with scalable UDE (execution engines) to provide performance at scale. This includes metadata & content processing and analysis of unstructured data of over 250+ diverse data formats within emails, multimedia, presentations, and various document types, allowing users to analyze diverse data formats for valuable insights.
- **Seamless Integrations and Open APIs:** Pre-built open APIs and connectors in Zubin streamline data integration with existing infrastructure and tools. This fosters data transformation by simplifying data ingestion and management from various sources, allowing for the creation of a unified data lake for analysis.
- **Comprehensive Data Storage Support with Data Discovery:** Supports on-premise, cloud, and hybrid environments for data storage. Additionally, data discovery capabilities help identify and organize data across diverse storage systems. This combination provides flexibility for data transformation projects and ensures all relevant data is accessible for analysis.
- **Optimized Performance for Efficient Analytics:** Utilizes caching, data compression, and query optimization to minimize latency and ensure fast data access. This improved performance is crucial for data transformation initiatives as it enables faster processing of large datasets and facilitates real-time analytics.



A Closer Look at What Makes Zubin Stand Out



[Click here for a demo](#)

What's in it for you?



Secure Cloud Migration Made Easy

Worried about cloud security (59% are!) during migration? Zubin automates secure data movement across platforms with predefined policies. Sensitive data analytics, classification, remediation and access controls, with comprehensive tracking & reporting, ensures compliance.



Break Down Silos, Boost ROI

Organizations that break down data silos through data integration initiatives see a 20% increase in the effectiveness of their analytics programs (Forrester). Zubin breaks down these barriers with features like policy-based migration, bi-directional file transfer, secure data replication, and granular access controls. This eliminates redundant data sprawl and optimizes resource utilization for strategic cost savings.



Consolidating to Unlock Data Harmony

On average, employees spend 1.8 hours each day, or 9.3 hours weekly, searching for and gathering information (McKinsey). Zubin unlocks hidden potential by bringing everything under one roof. Features like personalized data workflows, and advanced data analytics & classification, data curation & enrichment, BI & reporting, and much more give you a unified view of your business. This eliminates manual work and fuels growth with data-driven strategies.



Sustainable Data Optimization

Accenture reports adopting data storage optimization practices helps enterprises achieve a 12% reduction in their data center carbon footprint. Zubin champions sustainability with data & analytics. Intelligent classification and lifecycle management identifies and eliminates redundant data, reducing your footprint. Gain insights into your data's environmental impact and optimize storage for cost savings and sustainability.



Secure Collaboration & Effortless Compliance

Organizations that employ automated data classification experience a 30% reduction in compliance workload (Gartner). Zubin fosters secure data sharing within IT policies, streamlining collaboration. Its centralized platform simplifies data organization, classification, and access controls for RBAC-driven compliance. This ensures safe, secure, and governed data sharing.

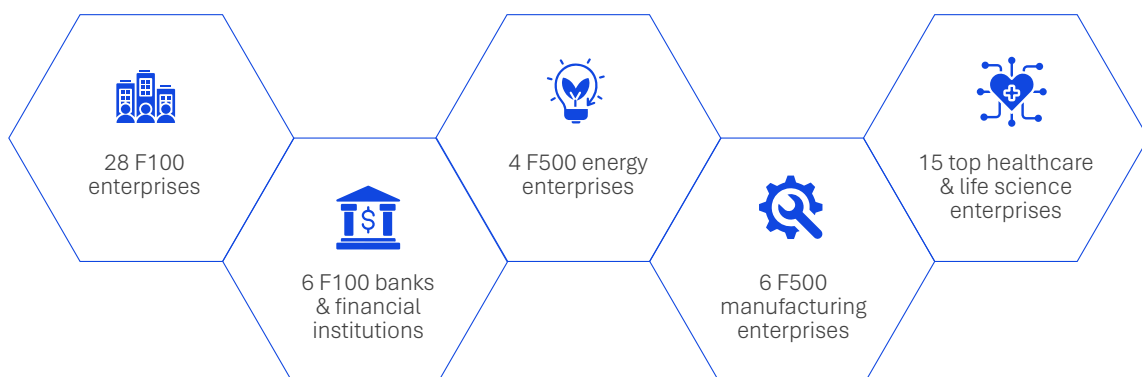
[Click here for a demo](#)



“Zubin lives up to its name. It's the key to unlocking the power of data for sustainability. The ability of the software to understand, manage and enable data stakeholders to gain insights and take action is a game changer in today's AI world of data deluge.”

CIO, F100 Insurance Enterprise

Trusted by 300+ organizations



Your next chapter of success awaits; let's write it together with Zubin.

[Click here for a demo](#)

For more information visit us at www.datadynamicsinc.com or reach out to our team at solutions@datdyn.com

© Data Dynamics 2024

