

Use Case

Detect, Protect, and Recover

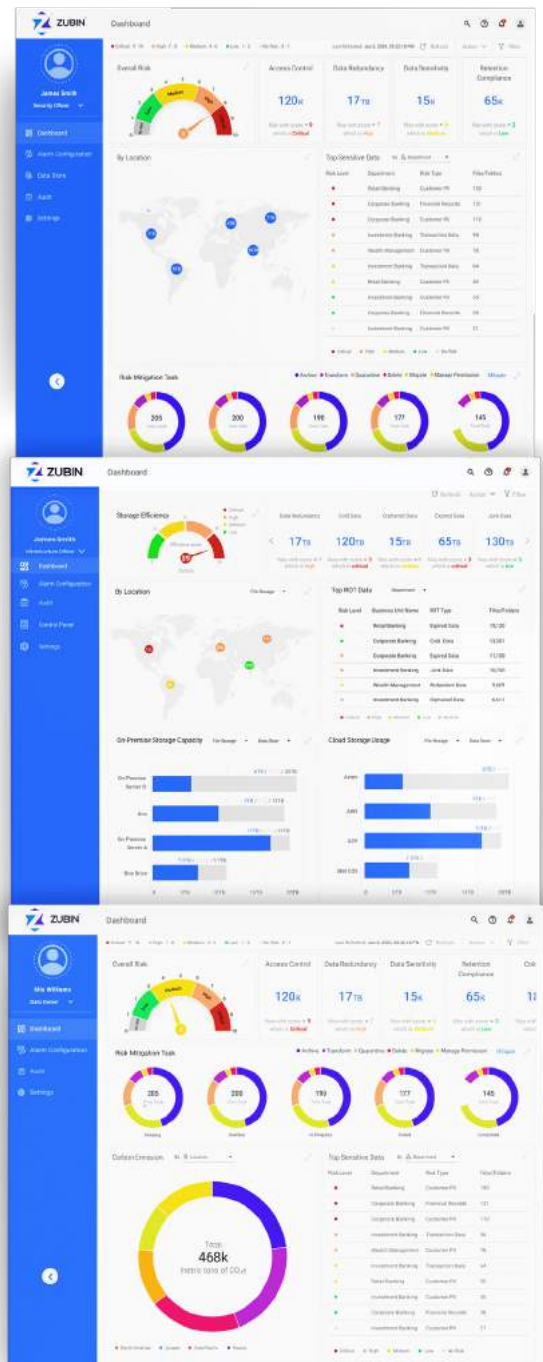
DORA Compliance Made Easy with Zubin

The Digital Operational Resilience Act (DORA) marks a significant step towards a more resilient and secure European financial sector. It mandates a holistic approach to managing digital risks, encompassing data management, cybersecurity, incident response, and operational resilience. To achieve DORA compliance, organizations must adopt a comprehensive strategy that covers various aspects of their operations.

▶ **This is where Zubin can help.**

Zubin is Data Dynamics' AI-powered self-service data management software, bringing a fresh approach to privacy, security, compliance, governance and optimization in the world of AI-led workloads. It empowers enterprises by enabling users across all levels - from C-suite to data owners - to discover, define, act, transform, and audit data through a user-friendly interface. Zubin brings correlation, consistency, and standardization across your organization by delivering granular insights, deriving recommended workflows, and automating actions using personalized policies and RBAC-driven processes. This transformation fosters a culture of data ownership, where everyone becomes a data champion, and the organization fulfills its responsibility as a data custodian.

This solution brief outlines six key use cases that demonstrate how Zubin can empower financial institutions to navigate the complexities of DORA and build a robust foundation for operational resilience, mitigate risks, enhance decision-making, and foster a culture of data ownership.



Comprehensive Data Inventory Management and ROT Minimization

Financial institutions struggle with managing "ROT" data – irrelevant or unnecessary information. This problem is worsened by the increasing amount and complexity of data, making it hard to decide what to keep or delete.



The European Central Bank (ECB) emphasizes the importance of data inventorying and classification for financial institutions under DORA.

Identifying and Managing ROT Data with Zubin

Zubin's Metadata Analytics and Content Analytics capabilities enable organizations to identify and classify data based on various criteria, including age, access patterns, and business value. By combining these insights with statistical sampling techniques, Zubin can pinpoint data that has become obsolete or redundant. Furthermore, Zubin's Retention Compliance feature helps organizations establish and enforce data retention policies. By automatically identifying data nearing its expiration date, Zubin empowers organizations to take timely actions, such as archiving, deleting, or migrating data to appropriate storage tiers. This proactive approach to data management reduces the risk of data breaches, optimizes storage costs, and ensures compliance with regulatory requirements.



A leading European bank faced mounting regulatory pressures and escalating storage costs due to an explosion of data.



Zubin can help the bank effectively identify and manage redundant, obsolete, and trivial (ROT) data, optimizing storage infrastructure and reducing operational risks. This proactive approach to data lifecycle management not only ensures compliance with GDPR and DORA but also positions the bank as a data-driven organization.

Enhanced Data Security and Risk Management

Organizations face challenges in identifying, managing, and protecting sensitive data from cyber threats and unauthorized access. This increases the risk of data breaches and operational disruptions.

DORA mandates robust data security measures to protect critical data infrastructure. Proactive risk management and incident response capabilities are essential for maintaining operational resilience.



Proactive Risk Management and Protection with Zubin



Zubin's Content Analytics, Classification and Tagging allows enterprises to identify and manage sensitive data across various storage locations. Data Containment and Isolation quarantines high-risk sensitive data in secure storage. RBAC Down to the Data Owner Layer ensures granular access controls. Risk Exposure Insights provide actionable insights into potential vulnerabilities, including data exposure and access anomalies. Data Security Orchestration, Automation, and Actionability automate security tasks, such as vulnerability scanning, patch management, and incident response, minimizing human error and enhancing overall security posture.

An insurance company needs to comply with GDPR and DORA regulations while protecting sensitive customer data from cyber threats. Zubin can help identify and classify sensitive customer information, implement access controls, and monitor for potential security risks. By automating security tasks and providing actionable insights, Zubin empowers the insurance company to strengthen its security posture and protect customer data effectively.



[Click here for a demo](#)

Effective Data Retention and Disposal

Managing data retention and disposal in line with regulatory requirements and business needs is complex and time-consuming. Non-compliance can lead to significant penalties.



DORA emphasizes the importance of data minimization and proper data retention practices. Effective data lifecycle management is crucial for operational resilience and compliance.

Optimized Data Lifecycle Management with Zubin

Zubin's Retention Compliance functionality identifies data nearing its expiration date, enabling timely action based on retention policies. Data Archival preserves data while optimizing storage costs. Data Redundancy eliminates duplicate data to reduce storage footprint. These capabilities, combined with Metadata Analytics for data lifecycle management, help organizations manage data retention effectively and comply with DORA regulations. Additionally, Zubin's Data Transformation capabilities ensure data is appropriately formatted for long-term storage or disposal.



A bank faces challenges in managing customer data retention in compliance with GDPR and DORA regulations. Zubin's data retention and disposal capabilities can help the bank identify customer data nearing its expiration date, allowing for timely deletion or archiving. This ensures compliance with data privacy regulations, frees up valuable storage space, and reduces the risk of data breaches.

Robust Incident Response and Recovery

Organizations often struggle to respond effectively to IT incidents, leading to operational disruptions and financial losses.

DORA mandates robust incident response and recovery capabilities. Organizations must be able to identify, contain, and recover from incidents promptly to maintain operational resilience.



Accelerated Incident Response and Recovery with Zubin

Zubin's Data Observability and Root Cause Analysis continuously monitors data usage and detects anomalies that may indicate potential incidents. High Availability and Disaster Recovery ensure uninterrupted data access and business operations. Data Usage & Traceability provides a clear audit trail for incident investigation. Additionally, Zubin's Data Encryption safeguards data confidentiality during incidents. These capabilities enable organizations to respond swiftly and effectively to incidents, minimizing their impact on operations.



A bank aims to build a resilient IT infrastructure to withstand potential disruptions. Zubin's data observability capabilities help the bank identify critical data dependencies and potential vulnerabilities. By understanding data usage patterns, the bank can implement measures to ensure business continuity and comply with DORA's operational resilience



[Click here for a demo](#)

Data-Driven Decision Making and Business Insights

Lack of data visibility and insights hinders informed decision-making and strategic planning.



DORA encourages data-driven decision-making to improve operational resilience. Organizations need to leverage data insights to identify potential risks and opportunities.

Data-Driven Decision Support with Zubin



Zubin's Data Aggregation and Harmonization creates a unified view of internal operational data, such as usage, sensitive data, risk, access control, retention compliance, data redundancy and more. Statistical Sampling provides representative data subsets for analysis. Enterprise Risk Posture and Infra Usage Business Intelligence and Reporting offer executive dashboards and reports for informed decision-making on risk assessment, resource allocation, and operational efficiency. Data Risk and Usage Reporting and Actionability by Team and Data Ownership provides data-driven insights for teams to optimize processes and identify potential bottlenecks. Additionally, Zubin's Data Wrangling and Curation for AI capabilities prepare data for advanced analytics and machine learning models, enabling organizations to extract deeper insights and drive innovation.



A large retail bank faces challenges in optimizing storage infrastructure operations and identifying potential fraud risks due to siloed data across various departments. Zubin can create a unified view of the entire enterprise data sphere, enabling the bank to identify trends based on data usage and detect anomalies that may indicate fraudulent activities. By providing actionable insights, Zubin empowers the bank to make data-driven decisions that optimize resource allocation and mitigate financial risks.

Empowering Data Owners and Fostering Data Culture

Traditional data governance models often leave data owners feeling disengaged and powerless. This hinders data stewardship and responsible data handling practices.



DORA emphasizes the importance of data governance and data ownership. Empowering data owners is crucial for building a strong data culture and fostering a culture of responsibility.

Data Ownership Empowerment with Zubin



Zubin's Data Owner Observability, Control and Actionability empowers data owners with self-service tools to manage and take action on their data. Classify and manage your data based on pre-defined policies or tailor it to your specific needs with custom criteria. RBAC Down to the Data Owner Layer provides granular access control. Policy-Based Transfer of Data Ownership ensures clear data ownership and accountability. This fosters a data-driven culture and empowers data owners to play an active role in data governance. Additionally, Zubin's Data Sharing capabilities enable secure and controlled data collaboration, promoting knowledge sharing and innovation.



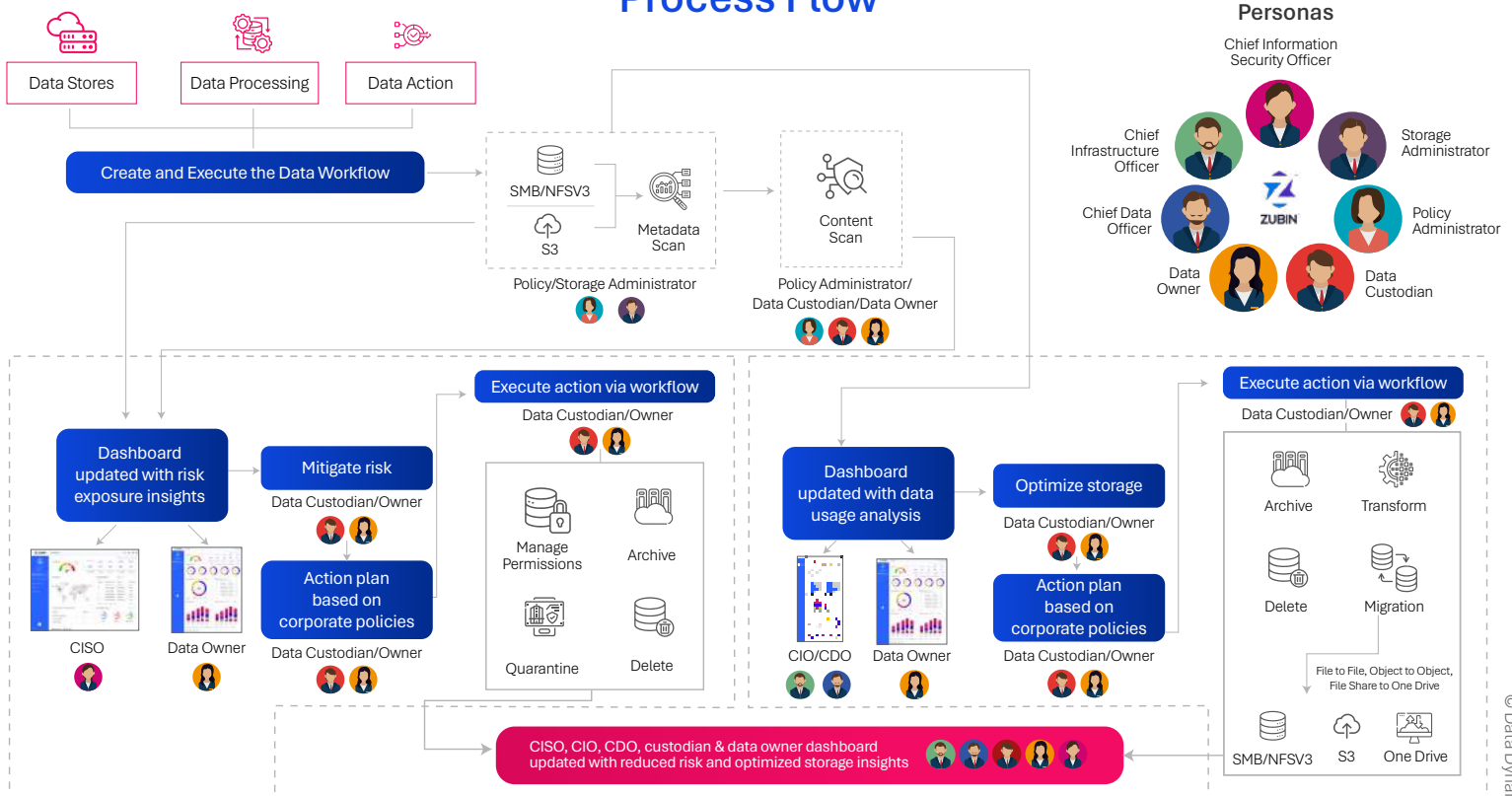
A bank seeks to improve data governance and compliance while fostering a data-driven culture among employees. Zubin's data ownership and access control features empower data owners to manage their data effectively, ensuring data privacy and security. By providing visibility into data usage and ownership, Zubin promotes a culture of accountability and responsibility for data management, aligning with DORA's emphasis on data governance and employee empowerment.

[Click here for a demo](#)

A Closer Look at What Makes Zubin Stand Out



Process Flow



Your next chapter of success awaits; let's write it together with Zubin.

[Click here for a demo](#)